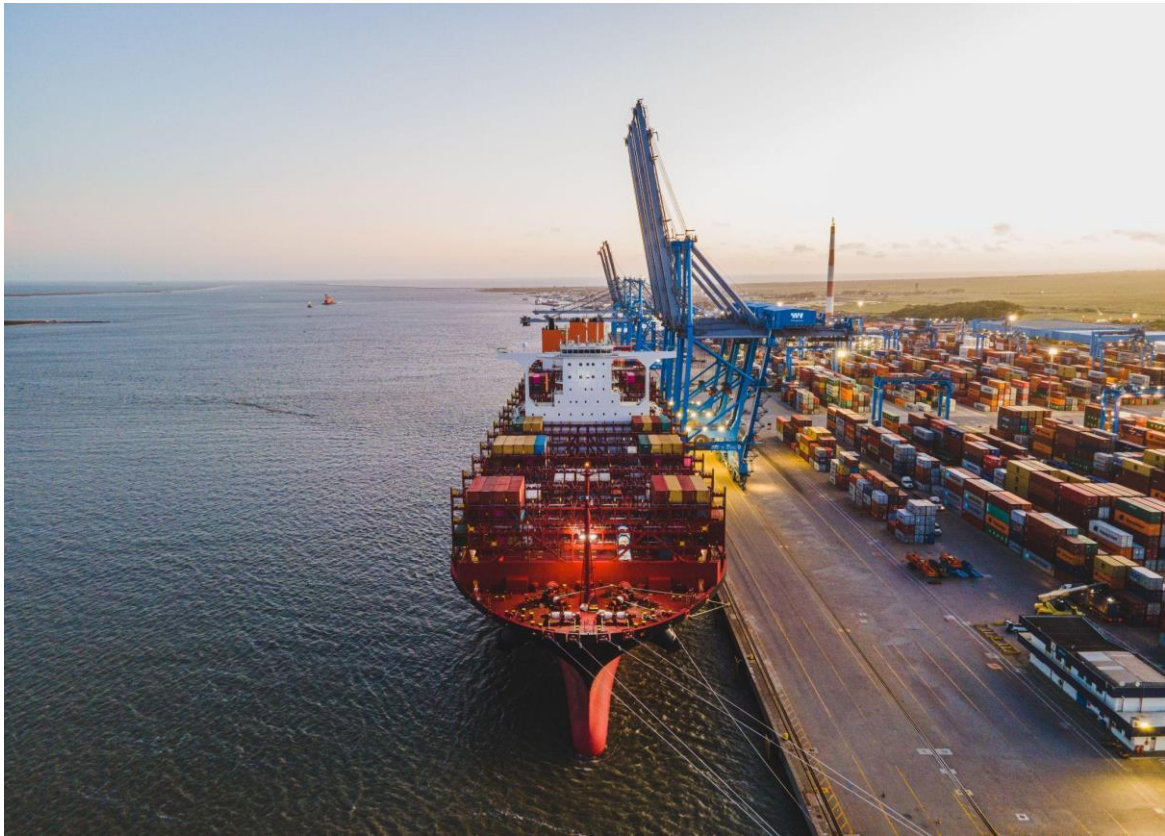


## Wilson Sons operates new international lines via Rio Grande Container Terminal

*The objective is to support cargo transport between South America and North Africa, the Mediterranean, the Middle East and India, offering greater service speed*



*Wilson Sons: new route will operate with five ships at Rio Grande Container Terminal, a Southern Cone hub*

Focused on expanding its area of activity and offering more options to its clients, Wilson Sons, which is among the leading port and maritime logistics operators in Brazil, is operating, through Rio Grande Container Terminal, in Rio Grande do Sul, a new line with SeaLead, a shipping company that transports containers and services.

Named MEDSA Service, the new direct shipping call route runs between South America and the Mediterranean, heading for Morocco. The new shipping line will allow South America to connect more efficiently with North Africa, the Mediterranean, the Middle East and India. The largest inland sea in the world, the Mediterranean is located to the north of Africa, the south of Europe and the west of Asia.

The route operates with five ships, namely: 1,930-TEU Cape Byron (TEU: twenty-foot equivalent units); 1,349-TEU Escape; 1,349-TEU Espoir; 1,700-TEU Green Hope; and 1,781-TEU Seatrade Chile.

MEDSA Service will also concentrate at Rio Grande Container Terminal cargo from the ports of Buenos Aires and Montevideo, in Argentina and Uruguay, respectively, via feeder vessels transhipping to various destinations up to the Mediterranean.

*“The new shipping route reiterates our commitment to offering greater service speed and transport capacity, which will boost the growth of Rio Grande do Sul's foreign trade and*



*strengthen our position as an important logistics hub in the Southern Cone,” says Paulo Bertinetti, CEO of Rio Grande Container Terminal.*

SeaLead CEO Suleyman Avci commented on the new service. *“With the new MEDSA Service, we are not only expanding our network, but also increasing our capacity to serve the Brazilian and Mediterranean markets. This service is designed to meet the high standards of reliability and efficiency that our clients expect from SeaLead,”* he says.

Rio Grande Container Terminal is the main access route connecting Rio Grande do Sul to Brazil and the world and, over nearly 27 years of operation, it has become a key piece in the economic development of the state. It currently serves over 3,000 importers and exporters, and receives the main shipping lines calling in Brazil, offering weekly services to all trades from 13 shipowners. Strategically located, Rio Grande Container Terminal has the capacity to operate 1.4 million TEUs and receive New Panamax vessels along its 900-metre pier, with high productivity, technology and automation, making it the best transshipment choice from the Southern Cone.

### **About Wilson Sons**

Recognized for its extensive experience of more than 187 years, Wilson Sons is among the leading port and maritime logistics operators in Brazil. The company has a national reach and offers comprehensive solutions to over 5,000 clients, including shipping companies, importers and exporters, the offshore energy industry, renewable energy projects, the agribusiness sector, as well as other players across various economic segments. Click [here](#) to learn more.

### **Press Relations**

#### ***Danthi Comunicação Integrada***

Gustavo Villela — [gustavo.villela@danthi.com.br](mailto:gustavo.villela@danthi.com.br) / +55 21 99124 5158

Lúcia Martins — [lucia.martins@danthi.com.br](mailto:lucia.martins@danthi.com.br) / +55 21 98121 6742