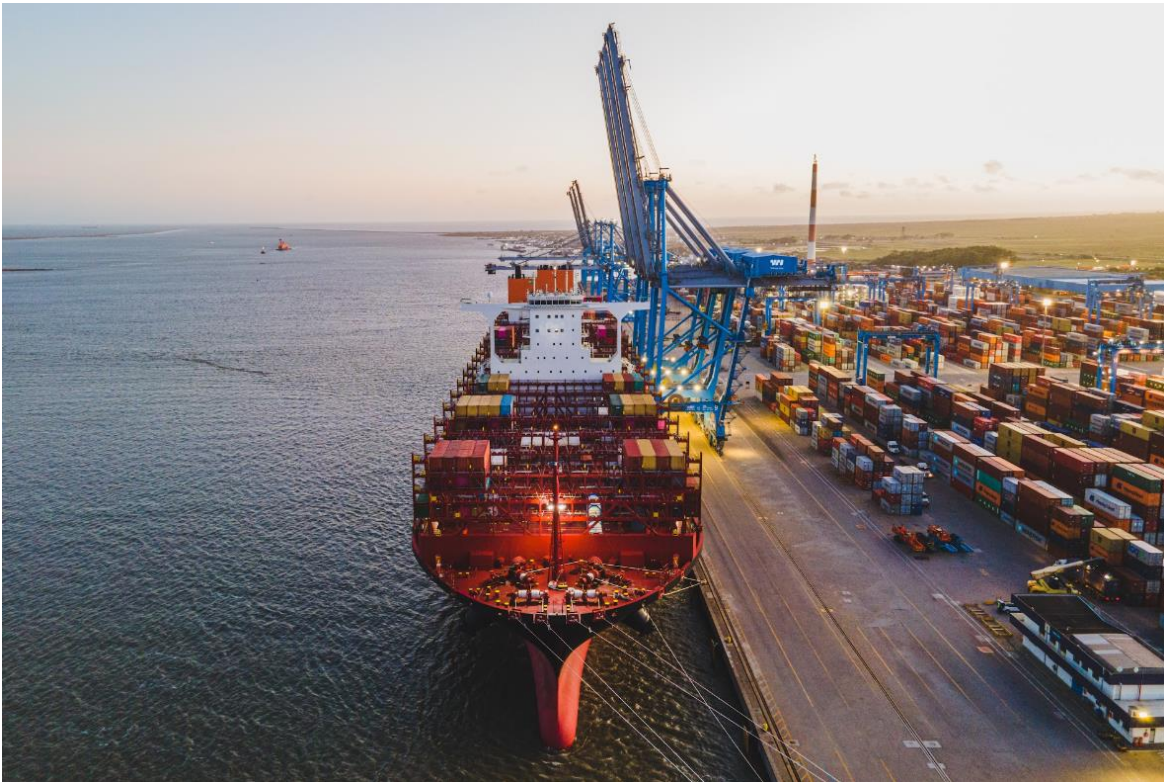


Wilson Sons reports an increase of 57% in pork exports from Rio Grande Container Terminal

Pork exports from the terminal in Rio Grande do Sul exceed 10,200 tons in the first seven months of this year, driven by Asian countries



Wilson Sons: Rio Grande Container Terminal delivers weekly services to global markets

This year, Wilson Sons has been reporting a sharp rise in pork exports from Rio Grande Container Terminal, in Rio Grande do Sul. Foreign sales of pork grew 57% in the first seven months of the year, compared to the same period in 2022, driven by Asian countries. The main destinations were China, Hong Kong and Singapore.

This year, pork exports through Rio Grande Container Terminal totalled 7,199 TEUs (twenty-foot equivalent units), which is equivalent to 3,620 containers, against 4,578 TEUs (2,307 containers) from January to July 2022. This year, pork exports totalled 102,051, against 64,751 tons for the same period of 2022.

Some factors have influenced the increase in pork exports from Rio Grande Container Terminal, such as the recovery of market share, as local exporters have chosen to ship larger volumes through the Rio Grande terminal than through Santa Catarina as compared to last year. The start of the operations of the NeoSamba shipping line is one of these factors, as larger ships and a direct route from Northern Europe to Rio Grande resulted in better transit times, and speedier and more efficient operations.

Paulo Bertinetti, CEO of Rio Grande Container Terminal, points out that the terminal, the most automated one in Brazil, plays a relevant role in the logistics of companies based in Rio Grande do Sul, “offering a safe and efficient alternative for handling different types of cargo”. Bertinetti adds: “In addition to the strategic location and the investments made, the recovered reliability of ship calls is guaranteeing a significant recovery of market share”.

Considered one of the most important container terminals in Brazil, and one of South America’s most competitive facilities, Rio Grande Container Terminal is Rio Grande do Sul’s gateway to the world. It has become, over the past 26 years of operation, a key asset in the economic development of the state. Serving over 3,000 importers and exporters, the Rio Grande Terminal facility receives the main shipping lines calling Brazil, offering weekly services to all trades in the world from 13 shipowners.

Of the operations carried out in the facility, exports represent 74% and imports, 26%. Over 600 varieties of goods, including parts, chemicals, resins and plastics, are shipped from more than 50 countries, including China, the United States, Morocco, Belgium and Singapore. Resins, frozen chicken, timber, pork meat, furniture are shipped to the United States, China, Peru and Saudi Arabia.

Equipped with a 900m long quay, the 735,000 m² facility has a static capacity of 30,000 TEUs, 20,000 m² of warehouses for general and special cargo and 10 fully automated entry and exit gates, in addition to 2,800 plugs for reefer containers. It features nine ship-to-shore gantry cranes capable of operating on 24-container wide vessels and 22 rubber tyred gantry cranes used for handling containers in the yard, and two cable-controlled mobile cranes, nine reach stackers and 56 yard tractors.

In May, a contract was signed for the terminal to have its energy 100% derived from renewable sources. The IREC (International Renewable Energy Certificates) certification was obtained for the years 2024/25/26. It can be used to report indirect energy consumption emissions in the GHG Protocol Program, a leading international methodology designed to quantify greenhouse gas emissions. Also, the certificate ensures traceability of the renewable energy source supplying the terminal, and clears carbon emissions from energy consumption in the years mentioned. Through this new energy system, all the energy supplying the Rio Grande Container Terminal will come from renewable sources, which includes wind, solar or hydroelectric power stations.

Rio Grande Container Terminal is supported by the operating system Navis N4, a global leader in port terminal management, and Teconline, a platform with more than 20 years of operation and over 2,600 active users from different countries,



Wilson, Sons

including carriers, forwarding agents, shipowners, local authorities, clients and cargo agents which inquire about cargo, vessel arrival dates and appointments.



About Wilson Sons

Wilson Sons is the largest port-shipping logistics operator in Brazil, with over 185 years of experience. The company operates across Brazil and offers complete solutions to more than 5,000 clients, including shipowners, importers and exporters, the offshore energy industry, renewable energy projects, agribusiness corporations, and other players in different businesses. Learn more at: <https://www.wilsonsons.com.br/en/>

Press Relations

Danthi Comunicação Integrada

Gustavo Villela — gustavo.villela@danthi.com.br / +55 21 99124 5158

Sérgio Costa — sergio@danthi.com.br / +55 21 99145 3644